

**TCF12 Antibody (monoclonal) (M01)****Mouse monoclonal antibody raised against a partial recombinant TCF12.****Catalog # AT4182a****Specification**

---

**TCF12 Antibody (monoclonal) (M01) - Product Information**

Application	WB, IHC
Primary Accession	<a href="#">O99081</a>
Other Accession	<a href="#">NM_207036</a>
Reactivity	Human
Host	mouse
Clonality	Monoclonal
Isotype	IgG2a Kappa
Calculated MW	72965

**TCF12 Antibody (monoclonal) (M01) - Additional Information****Gene ID** 6938**Other Names**

Transcription factor 12, TCF-12, Class B basic helix-loop-helix protein 20, bHLHb20, DNA-binding protein HTF4, E-box-binding protein, Transcription factor HTF-4, TCF12, BHLHB20, HEB, HTF4

**Target/Specificity**

TCF12 (NP\_996919, 364 a.a. ~ 453 a.a) partial recombinant protein with GST tag. MW of the GST tag alone is 26 KDa.

**Dilution**

WB~~1:500~1000

IHC~~1:100~500

**Format**

Clear, colorless solution in phosphate buffered saline, pH 7.2 .

**Storage**

Store at -20°C or lower. Aliquot to avoid repeated freezing and thawing.

**Precautions**

TCF12 Antibody (monoclonal) (M01) is for research use only and not for use in diagnostic or therapeutic procedures.

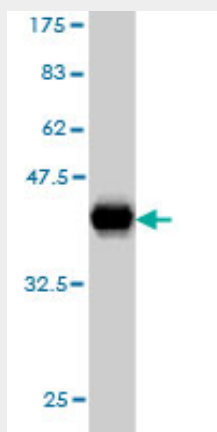
**TCF12 Antibody (monoclonal) (M01) - Protocols**

Provided below are standard protocols that you may find useful for product applications.

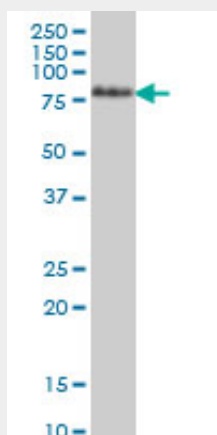
- [Western Blot](#)
- [Blocking Peptides](#)

- [Dot Blot](#)
- [Immunohistochemistry](#)
- [Immunofluorescence](#)
- [Immunoprecipitation](#)
- [Flow Cytometry](#)
- [Cell Culture](#)

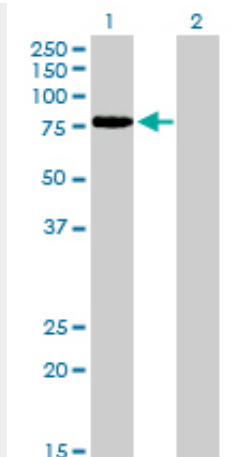
#### TCF12 Antibody (monoclonal) (M01) - Images



Antibody Reactive Against Recombinant Protein. Western Blot detection against Immunogen (35.64 kDa) .



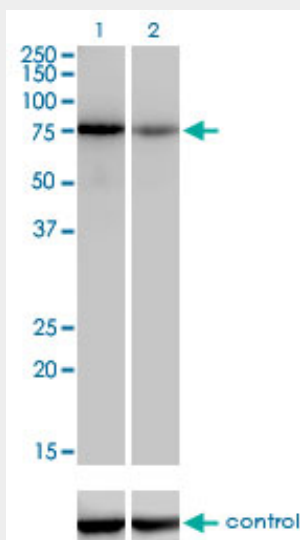
TCF12 monoclonal antibody (M01), clone 2E9 Western Blot analysis of TCF12 expression in Jurkat (Cat # AT4182a)



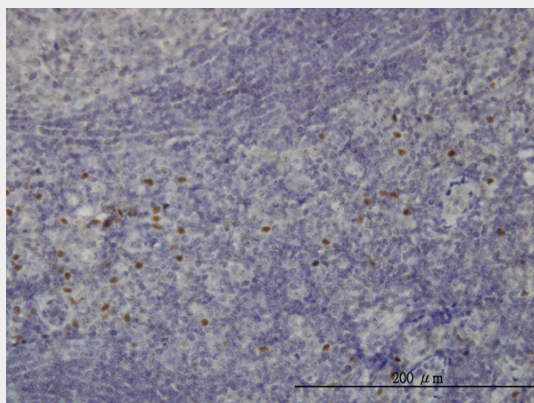
Western Blot analysis of TCF12 expression in transfected 293T cell line by TCF12 monoclonal antibody (M01), clone 2E9.

Lane 1: TCF12 transfected lysate(75.8 KDa).

Lane 2: Non-transfected lysate.



Western blot analysis of TCF12 over-expressed 293 cell line, cotransfected with TCF12 Validated Chimera RNAi (Cat # AT4182a)



Immunoperoxidase of monoclonal antibody to TCF12 on formalin-fixed paraffin-embedded human tonsil. [antibody concentration 1 ug/ml]

**TCF12 Antibody (monoclonal) (M01) - Background**

The protein encoded by this gene is a member of the basic helix-loop-helix (bHLH) E-protein family that recognizes the consensus binding site (E-box) CANNTG. This encoded protein is expressed in many tissues, among them skeletal muscle, thymus, B- and T-cells, and may participate in regulating lineage-specific gene expression through the formation of heterodimers with other bHLH E-proteins. Several alternatively spliced transcript variants of this gene have been described, but the full-length nature of some of these variants has not been determined.

**TCF12 Antibody (monoclonal) (M01) - References**

Synergy between IL-15 and Id2 promotes the expansion of human NK progenitor cells, which can be counteracted by the E protein HEB required to drive T cell development. Schotte R, et al. J Immunol, 2010 Jun 15. PMID 20483740. Personalized smoking cessation: interactions between nicotine dose, dependence and quit-success genotype score. Rose JE, et al. Mol Med, 2010 Jul-Aug. PMID 20379614. The variant rs1867277 in FOXE1 gene confers thyroid cancer susceptibility through the recruitment of USF1/USF2 transcription factors. Landa I, et al. PLoS Genet, 2009 Sep. PMID 19730683. AML1/ETO oncoprotein is directed to AML1 binding regions and co-localizes with AML1 and HEB on its targets. Gardini A, et al. PLoS Genet, 2008 Nov. PMID 19043539. CBFA2T3-ZNF652 corepressor complex regulates transcription of the E-box gene HEB. Kumar R, et al. J Biol Chem, 2008 Jul 4. PMID 18456661.